



The Global Leaders in Infrared Cameras

**LAW ENFORCEMENT**

A P P L I C A T I O N S



**Portable. Affordable. Essential.**

[www.flirthermography.com/scout](http://www.flirthermography.com/scout)

# Find Them First with the ThermoVision® SCOUT™



The **ThermoVision® Scout™** is the latest in infrared camera technology offering superior tracking capabilities for a wide variety of law enforcement applications. Handheld, lightweight, rugged and easy to use, the ThermoVision Scout is ideal for search and rescue, patrol or SWAT operations. This new infrared camera allows officers to see suspects or victims clearly in complete darkness or fog, through foliage and in other hard to see situations, often times from 1200 feet away. ThermoVision Scout incorporates true infrared detector technology that offers substantial detection capabilities above and beyond the "low level light" technology currently on the market.

Built to improve officer safety, the vivid 2.5" color LCD allows officers to peer around corners or look into attics without exposing themselves to the line of fire. In fact, the Scout is so subtle, suspects won't even know they're being tracked by a thermal detection device. No other camera can compare to the state-of-the-art features of the Scout.

Visit us at [www.flirthermography.com/scout](http://www.flirthermography.com/scout) to view a video of the Scout used in real-world law enforcement applications.

## Better Because:

- Affordable
- Handheld and easy-to-use
- Lightweight yet durable
- LCD Screen for easy viewing
- Attaches to belt
- Instantly ready for use

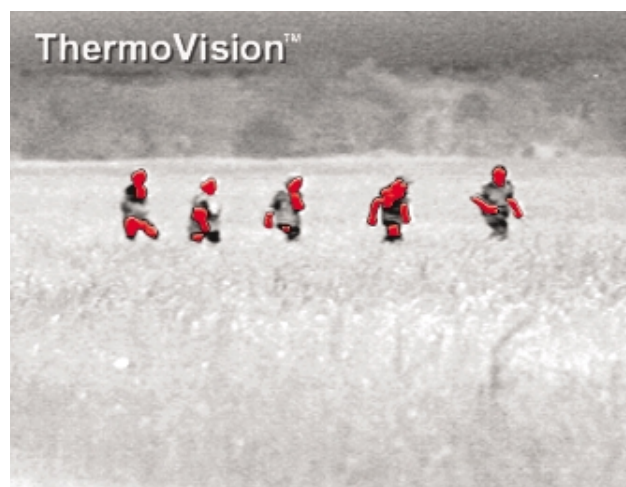
## Essential for:

- Seeing around corners
- Building searches, including attics
- Tracking suspects "thermal footprints" immediately after they've fled a scene
- Finding suspects or victims in complete darkness
- Improving officer safety
- Rapid Searches

# InstAlert™

## Find suspects and victims fast.

The Scout's exclusive InstAlert object tagging feature highlights warm objects, such as people or vehicles, in red for immediate operator attention. (The background of the image remains in black and white for detailed scene analysis.) Utilizing the InstAlert's powerful auto-contrast algorithm instantly optimizes image contrast for maximum target definition and tracking capability.

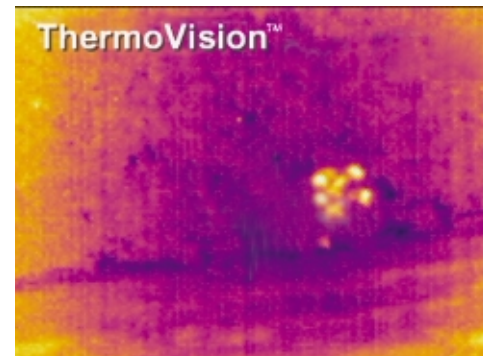


# Next to the K-9 Unit, this will be your best friend.

*The Scout infrared camera can see the "heat signature" of the suspect's footprints during rapid pursuits, providing the officer with an advanced level of suspect track-ability. Without the Scout, the officer wouldn't know which way the criminal ran.*



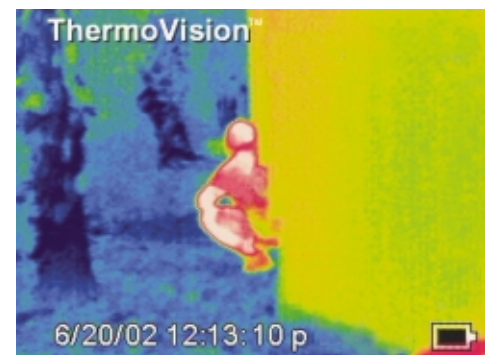
*Suspect is hiding behind foliage and is undetectable to the human eye, giving the criminal an advantage and exposing the officer to danger. The infrared camera sees through the foliage, highlighting the suspect, improving officer safety.*



*Officer peers atop ceiling panels and sees suspect hiding in near-complete darkness, clutching building rafters.*



*Improve officer safety. Suspect is seen hiding around a corner. Officer uses the Scout with minimal exposure to his body and with stealth.*



## About FLIR Systems

With over 30 years experience and more than 30,000 of its IR cameras in use, FLIR is the undisputed global leader in infrared systems.

From military applications to border patrol, customs and federal law enforcement, FLIR is the recognized leader with hundreds of airborne and other surveillance systems on the market today. No other company offers such a wide range of infrared cameras, software, service, training and support.



The Global Leaders in Infrared Cameras

Go To Infrared

801-393--0808

To learn more about infrared cameras :

GO To Infrared

info@gotoinfrared.com  
801-393-0808

